



LUXITA ENGINEERING CONSULTANCY - L.L.C - S.P.C

لوکسیتا للاستشارات الهندسية - ذ.م.م - ش.ش.و





OFFICES

UNITED ARAB EMIRATES OFFICES

ABU DHABI : Addax Tower 1201 - Reem Island
DUBAI : Westbury Tower 1201 - Business Bay

EUROPE OFFICES

FLORENCE : Piazza Matteotti N. 40
ELBASAN : Rruga . 28 Nendori Nd 109/1 Elbasan - Tirana

WHY WORK WITH US



We create world-class design solutions that are tailored to the needs of cities and communities around the world.

ABOUT LUXITA

LUXITA Architectural Engineering Consultancy is a company of Italian origin with its headquarters in Abu Dhabi and branches in Dubai, Florence and Tirana.

LUXITA Architectural Engineering Consultancy belongs to the EuroAlba Holding, a leader in the creation of important works at an international level.

LUXITA Architectural Engineering Consultancy is specialized in Advanced Architecture and Strategic Design. Creativity does not mean improvisation without any method, the project is not the result of random choices made for the fashion of the moment, but arises from the assimilation and reworking of proportions, shapes and figures inherited from past traditions and the present, it is the harmony between the volumes, the study of positioning, the role of light, the contrast and the combination of different colors and materials. To realize the desires of our Exclusive Customers, this defines the Culture, History and Identity of each of our customers to make a project of guaranteed success.

LUXITA Architectural Engineering Consultancy is present on the most important international markets with the creation of exclusive Luxury Designs, with elegance, unparalleled style and refined class, together with the uniqueness of the needs of our exclusive customers, keeping in mind their traditions and their desires.

LUXITA Architectural Engineering Consultancy has a Core Team of Italian Architects, with a solid and proven International Experience, who can cover all the skills of Architecture and Design for Innovative, Unique and Highly Successful Projects.



DUBAI



ABU DHABI



FLORENCE



TIRANA

Mission

To innovate and inspire through visionary architectural solutions, enriching spaces and communities with sustainable design practices.

Vision

We are amongst the leading Architectural & Design companies recognized and appreciated globally.

Values

Integrity: Our reputation is built on honesty, trust, and respect

Collaboration: Respect the collaborative approach with clients, consultants, and contractors to achieve success

Quality

Commitment: Achieving Excellence in all aspects of our Business

Innovation: Encouraging new ideas, and delivering cutting-edge solutions that shape the future of design



**STRATEGIC
ARCHITECTURE**

OUR CORE TEAM

At LUXITA Architectural Engineering Consultancy, our Core Team of architects leverage their training, knowledge, and experience to create inspired designs that speak to our client's vision.

As trusted UAE architecture consultants, we combine innovative solutions with creative design to generate sustainable solutions for our clients.

Our design process is built on the foundation of fostering unique designs backed by global knowledge and driven by local expertise.

We're passionate about exceeding expectations and making a positive impact on our society and environment through thoughtfully executed Design, With the supervision of all conceptual and operational phases by our Core Team of four Architects with great International Experience.



Dr. Arch. Francesco Gentile



Dr. Arch. Emanuele Garufi

PROJECTS



Luxita
LUXITA ENGINEERING CONSULTANCY - L.L.C - S.P.C
لو كسي تا للاستشارات الهندسية - ذ.م.م - ش.س.و

PROJECTS

Arch. FRANCESCO GENTILE

CEO Dubai

FRANCESCO GENTILE was born in Italy in a clinic on a cliff overlooking the sea in a beautiful Italian city, probably for this reason he has always had the need to explore, accept challenges and do unconventional things. The family he comes from is a family with strong traditions and strong values such as integrity, correctness and the value of the word. He graduated in Architecture from the University of Rome La Sapienza.

He began his professional activity by collaborating with important international companies, he has operated in the most important international markets with the creation of exclusive and unique projects, where strong leadership, competence, particular attention to all activities, quality, times, costs, they were fundamental to achieving the objective.

Francesco Gentile has always continued to study and increase his knowledge and skills, attending the most important academic institutes.

For about 15 years he was CEO and Director of the Design Department of LUXURY Remodeling & Renovation LLC (European and Emirates company), becoming trusted Architect and Designer for the most important Hollywood actors between Los Angeles, Florida and the Caribbean islands, following luxury projects worth hundreds of millions of dollars. He was a member of the Core Team of the UAEWORLD Steering Committee, for the planning, design and conception of a sustainable New Verdant project in Brazil. In 2005 he filed a patent with the World Intellectual Property Organization - International Bureau, an invention in the aeronautical recreational field under the name "Free Flight", with the registration number for intellectual rights (PCT - WO2005/058697 A1). In 2006 it was recognized, in its category, as the best patent of the year. In 2010 the Shanghai World Exhibition applied for this patent to include it in the Lithuania exhibition area.

In 2020 he was appointed International Ambassador of the LIMES Italian Aerospace District for the Middle East and South-East Asia area.

In 2021 he was awarded the Certified Honorem in Space Architecture & Design by the European Center for the Exploration and Colonization of Space.



Dr. Arch. Francesco Gentile



DUBAI



Luxury Villa
Grace Bay Beach
Caicos Island - USA











Luxury Villa

Hollywood Hill Bel Air - USA













Luxury Villa
Erie Lake Toledo - USA

















Luxury Villa
Hollywood Hill - USA



GYPSET LIVING
ECO HOUSES
AMERICAN FASHION
VIA MICHIGAN AVENUE

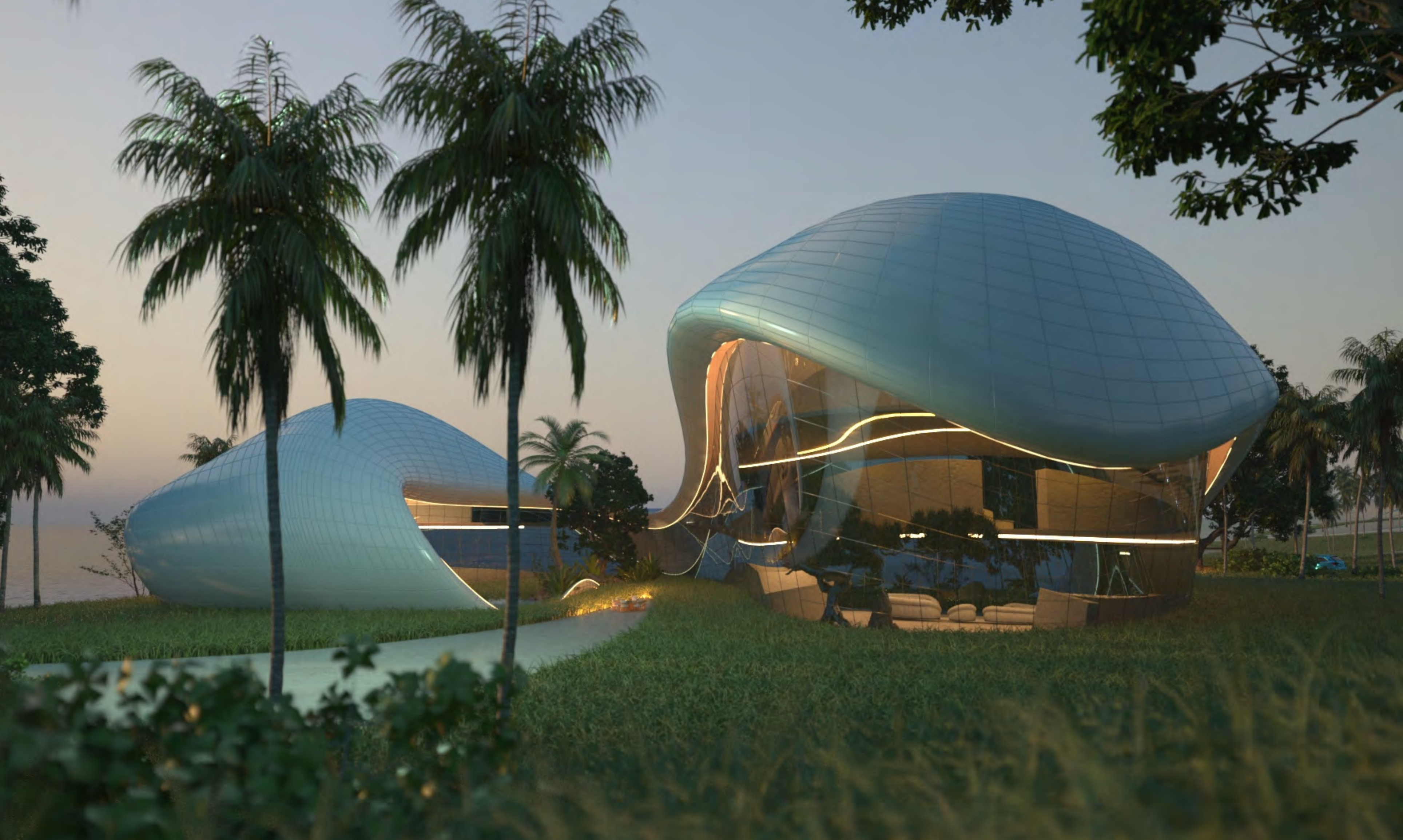






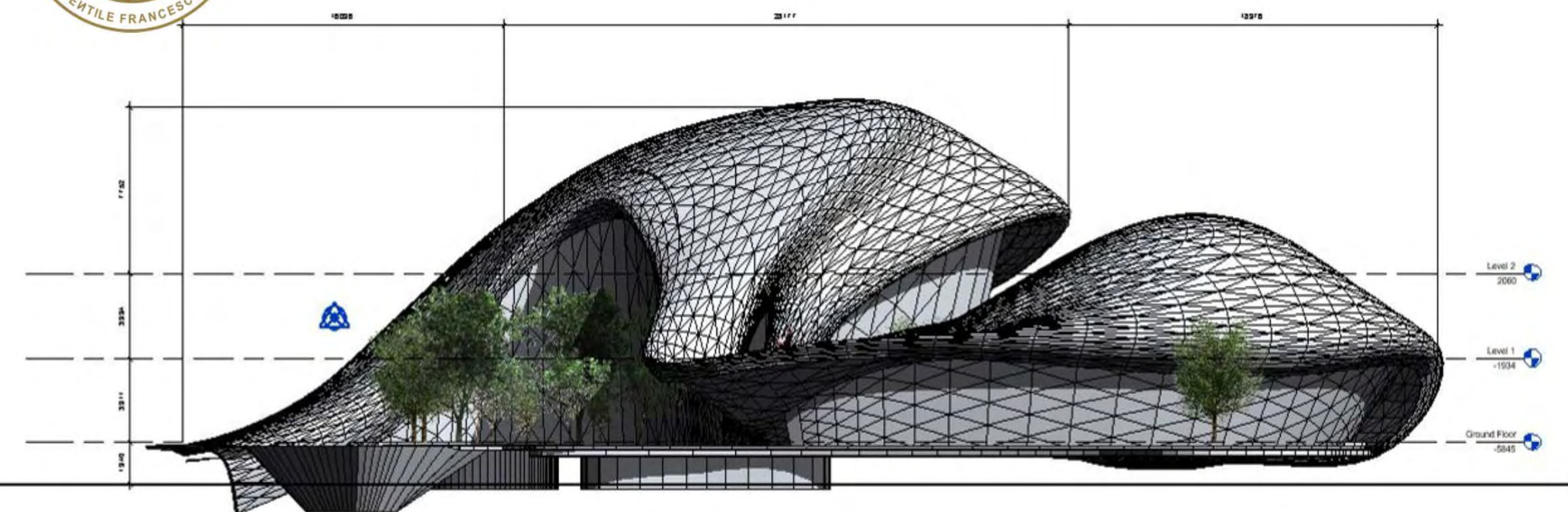
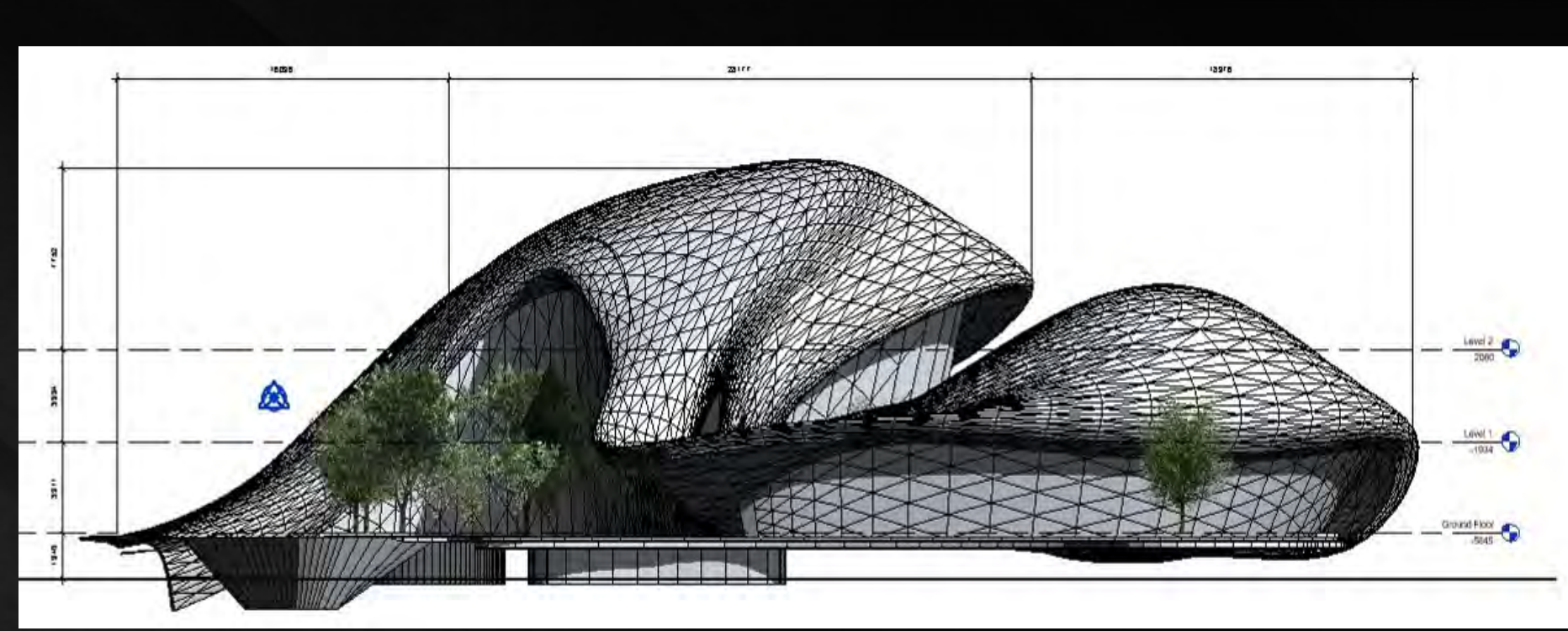


Luxury Villa
Organic & Sustainable Villa
Fort Lauderdale - USA











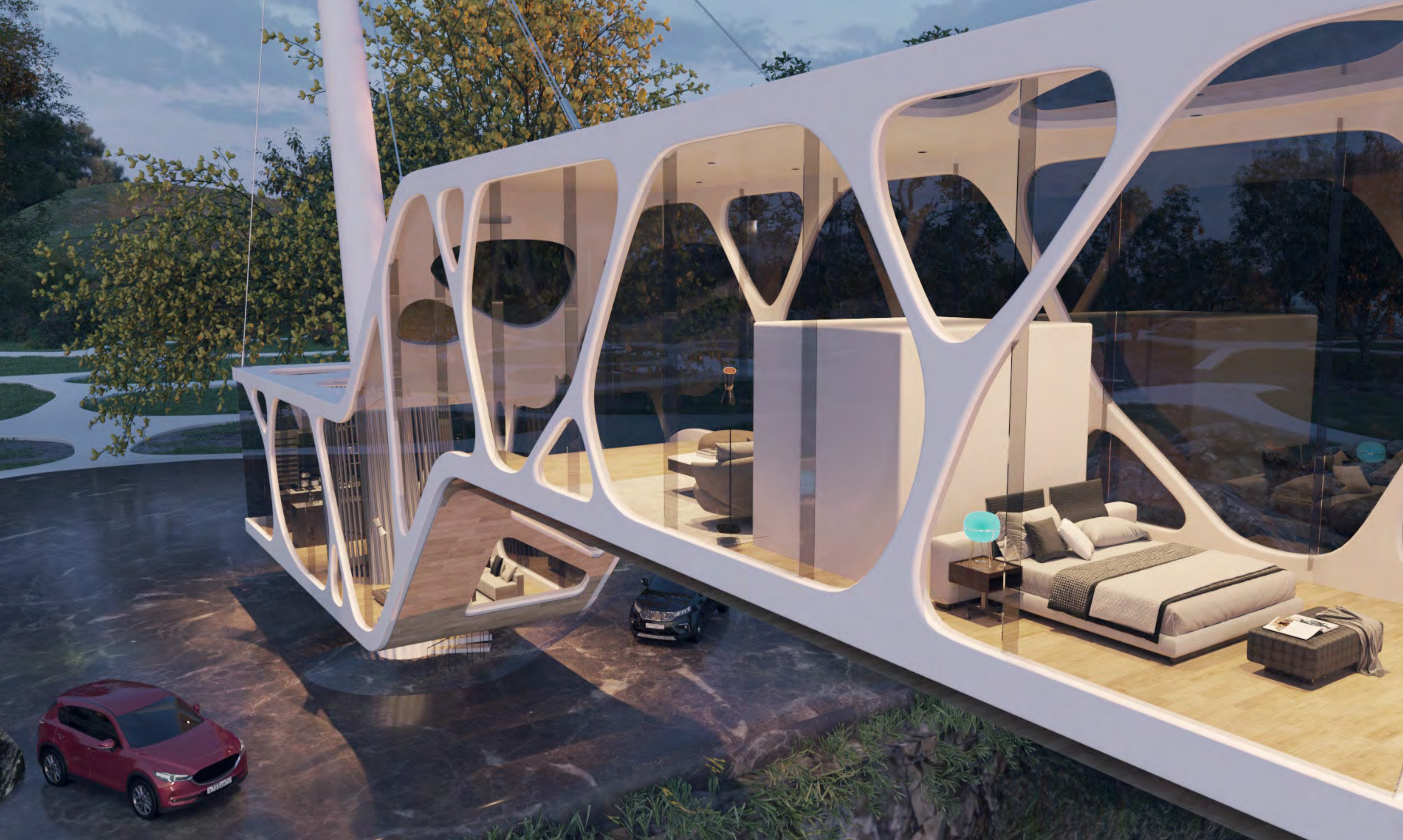


Luxury Villa

Observatory Villa Concept - 2014

Niagara Falls Country Club- USA







SHANGHAI

WORLD EXPO 2010
Latvian Exhibition Area

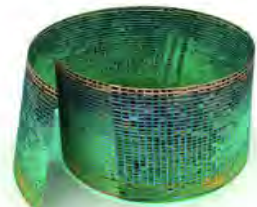




PEOPLE

BETTER PEOPLE

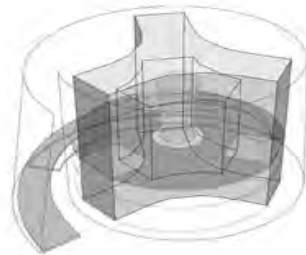
THE SYMBOL FOR THE FORM AND BASIC IDEA OF LATVIA PAVILION DERIVES FROM OBSERVING THE DEVELOPMENT OF CIVILIZATION WHICH GOES AROUND THE SPIRE.



NATURE

BETTER NATURE

THE FACADE OF THE PAVILION SYMBOLIZES NATURE (THE FOREST, THE SEA, THE EARTH, THE SKY, AND THE WIND). IT'S KINETIC, NATURAL OUTLOOK REPRESENTS LATVIAN IDENTITY.



CITY

BETTER CITY

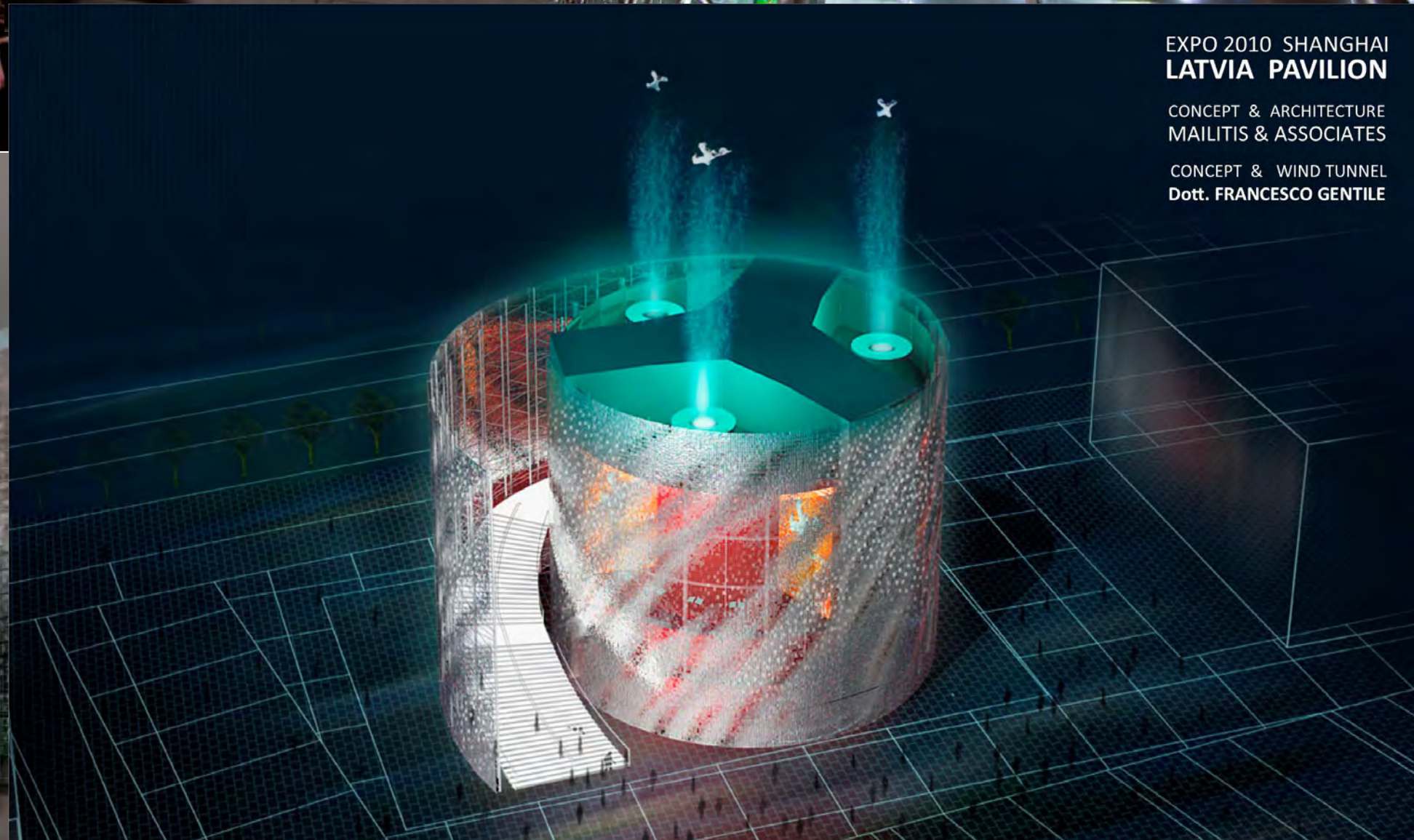
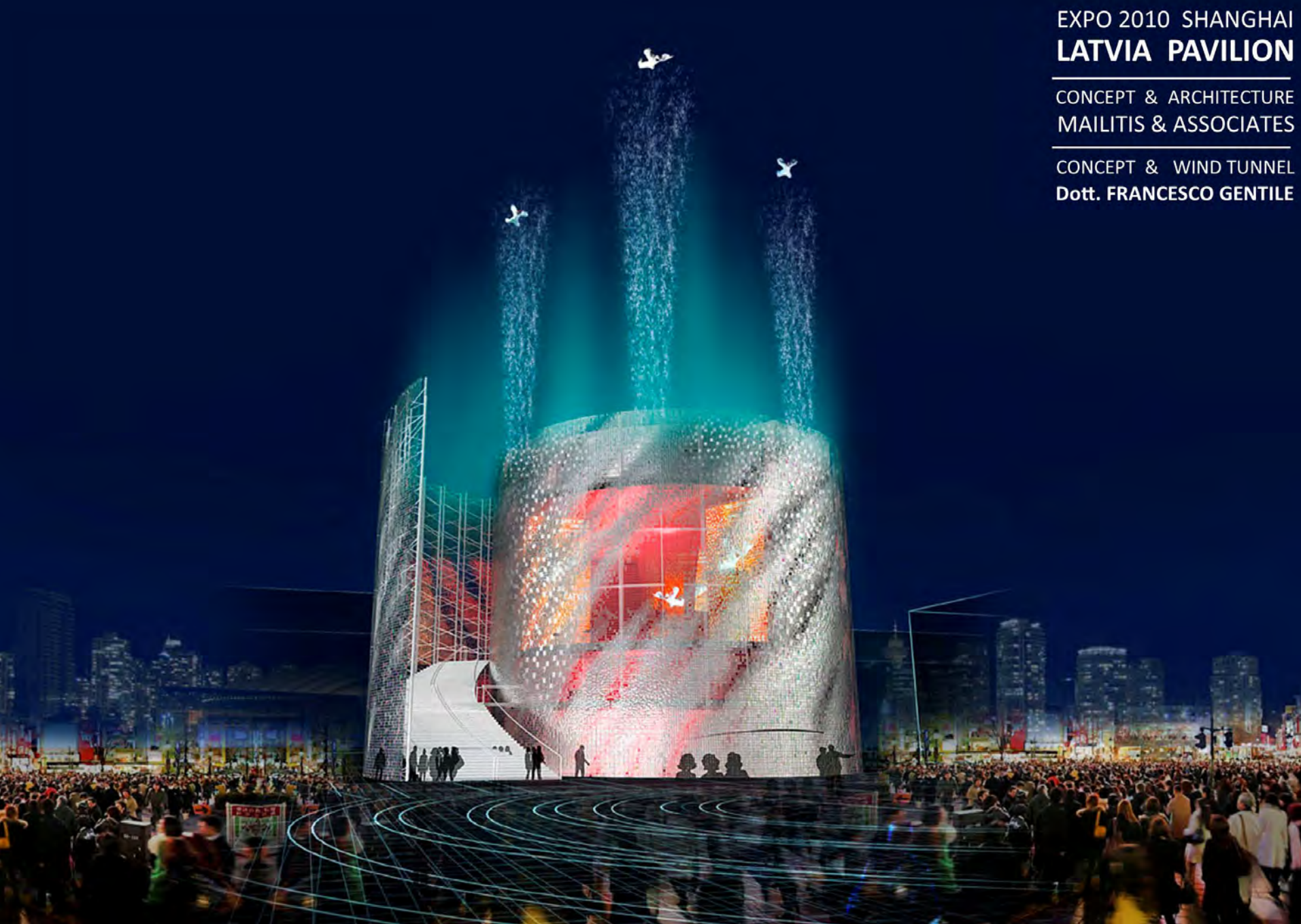
IN ORDER TO ACQUIRE ENERGY, THE CITY BECOMES A CENTRE FOR TECHNOLOGIES.



HARMONY

BETTER LIFE

PEOPLE CAN FLY IF NATURE AND TECHNOLOGY ARE IN HARMONY.





Espacenet

Bibliographic data: WO2005058697 (A1) — 2005-06-30

A STRUCTURE FOR RAISING PERSONS BY MEANS OF AN AIR FLOW

Inventor(s): GENTILE FRANCESCO [IT]; GALIGANI ANITA [IT] ± (GENTILE, FRANCESCO, ; GALIGANI, ANITA)

Applicant(s): GENTILE FRANCESCO [IT]; GALIGANI ANITA [IT] ± (GENTILE, FRANCESCO, ; GALIGANI, ANITA)

Classification: - international: A63G31/00; B64D23/00; (IPC1-7): A63G31/00; B64D23/00

- cooperative: A63G31/00; B64D23/00; A63G2031/005

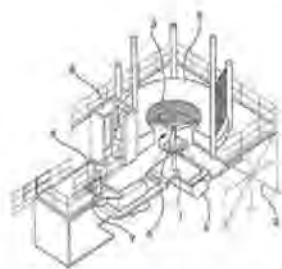
Application number: WO2004/IT00162 20040331 Global Dossier

Priority number(s): IT2003RM00577 20031216

Also published as: AT374146 (T); EP1697211 (A1); EP1697211 (B1); ITRM20030577 (A1); US2007129157 (A1); more

Abstract of WO2005058697 (A1)

A structure used to raise persons by means of air jets (currents), which is utilised in funfairs or the like, comprising several flight position (3) The flight position is associated with a device (1) that generates a vertical air flow, whose flow rate and intensity are constantly monitored from a control room (9) provided with an alphanumeric display. The device (1) includes a variable pitch propeller (6) driven by an electric motor whose rpm is adjusted using an inverter. An electric signal from a balance (7) is processed in order to determine what frequency should the motor supply current have to raise a participant of this weight up to a maximum height which is preferably comprised in the interval of about 2.5 to 3 meters.



US007572189B2

(12) United States Patent Gentile et al.

(10) Patent No.: US 7,572,189 B2 (45) Date of Patent: Aug. 11, 2009

(54) STRUCTURE FOR RAISING PERSONS BY MEANS OF AN AIR FLOW

(75) Inventors: Francesco Gentile, Rome (IT); Anita Galigani, Trigoria Alta (IT)

(73) Assignee: Free Flight S.r.l., Verona (IT)

(*) Notice: Subject to any disclaimer, the term of this patent is extended or adjusted under 35 U.S.C. 154(b) by 266 days.

(21) Appl. No.: 10/583,043

(22) PCT Filed: Mar. 31, 2004

(86) PCT No.: PCT/IT2004/000162

§ 371 (c)(1), (2), (4) Date: Jun. 15, 2006

(87) PCT Pub. No.: WO2005/058697

PCT Pub. Date: Jun. 30, 2005

(65) Prior Publication Data

US 2007/0129157 A1 Jun. 7, 2007

(30) Foreign Application Priority Data

Dec. 16, 2003 (IT) RM2003A0577

(51) Int. Cl.

A63G 31/04 (2006.01)

G09B 9/08 (2006.01)

(52) U.S. Cl. 472/50; 472/130; 472/137; 434/247; 73/147

(58) Field of Classification Search 472/49; 472/50; 68, 136, 137; 434/247, 258, 59; 73/147

See application file for complete search history.

(56) References Cited

U.S. PATENT DOCUMENTS

- 4,700,565 A * 10/1987 Albruschkal 73/147
5,209,702 A * 5/1993 Arenas 472/50
5,593,352 A * 1/1997 Methfessel et al. 434/44
5,655,909 A * 8/1997 Küchen et al. 73/147
5,753,811 A * 5/1998 Consolini 73/147
6,083,110 A * 7/2000 Küchen 472/50
6,139,439 A * 10/2000 Ure 472/50
6,315,672 B1 * 11/2001 Gillet et al. 434/59
7,153,136 B2 * 12/2006 Hatleslad et al. 434/59

FOREIGN PATENT DOCUMENTS

WO WO 00/59595 10/2000

* cited by examiner

Primary Examiner—Kien T Nguyen (74) Attorney, Agent, or Firm—Young & Thompson

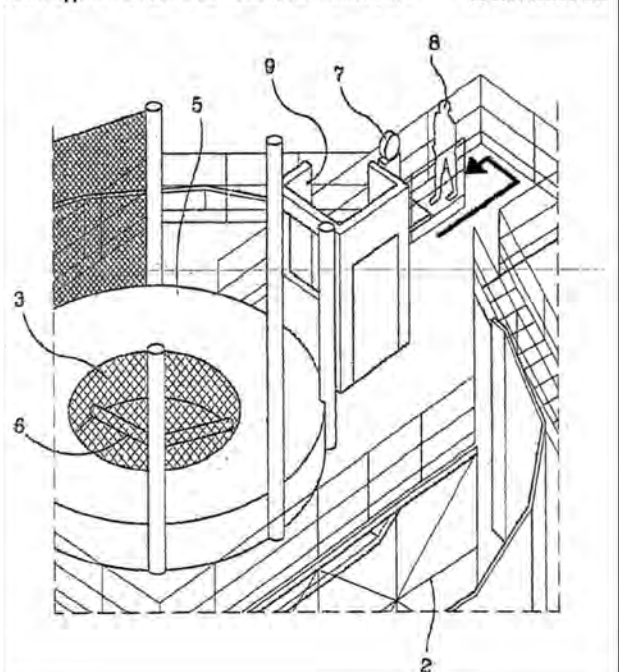
(57) ABSTRACT

A structure used to raise persons by use of air jets (currents), includes several flight positions (3). Each flight position is associated with a device (1) that generates a vertical air flow, whose flow rate and intensity are constantly monitored from a control room (9) provided with an alphanumeric display. The device (1) includes a variable pitch propeller (6) driven by an electric motor whose rpm is adjusted using an inverter. An electric signal from a balance (7) is processed in order to determine what frequency the motor supply current should have to raise a participant of this weight up to a maximum height which is preferably about 2.5 to 3 meters.

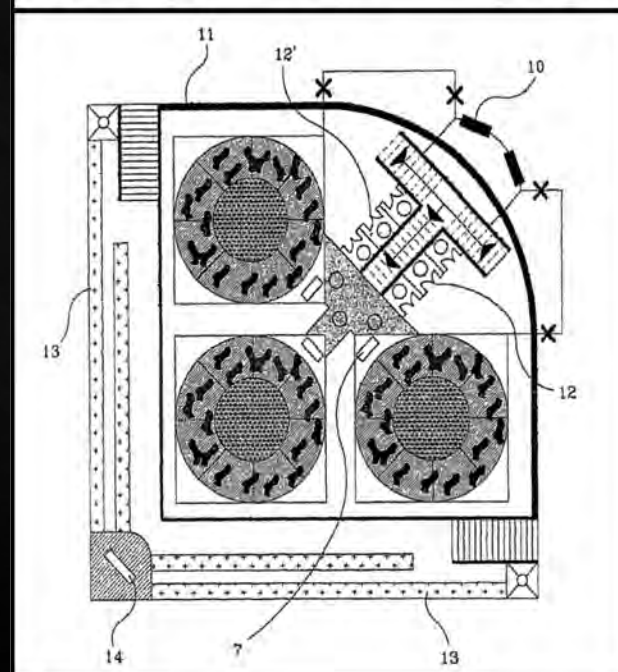
15 Claims, 7 Drawing Sheets



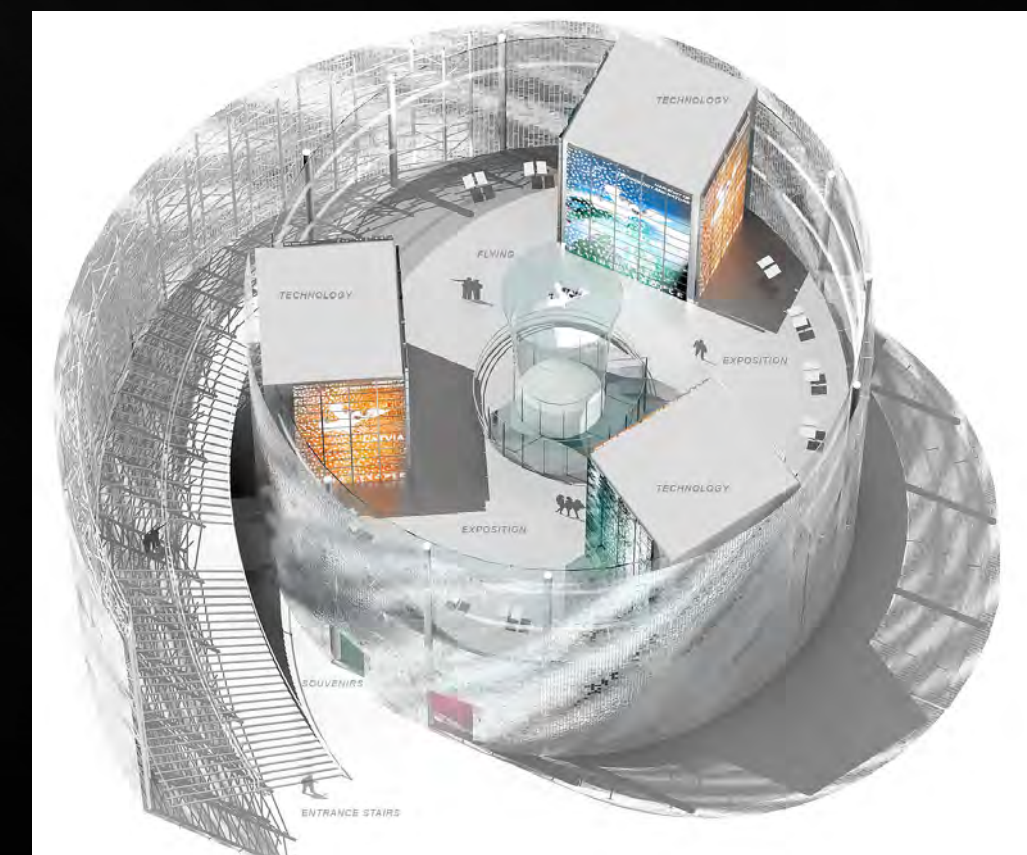
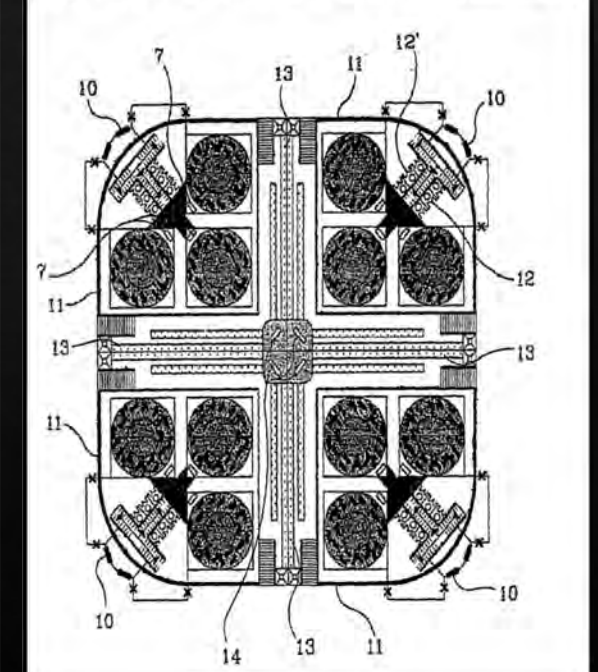
Patent Application Publication Jun. 7, 2007 Sheet 2 of 7 US 2007/0129157 A1



U.S. Patent Aug. 11, 2009 Sheet 6 of 7 US 7,572,189 B2



Patent Application Publication Jun. 7, 2007 Sheet 5 of 7 US 2007/0129157 A1

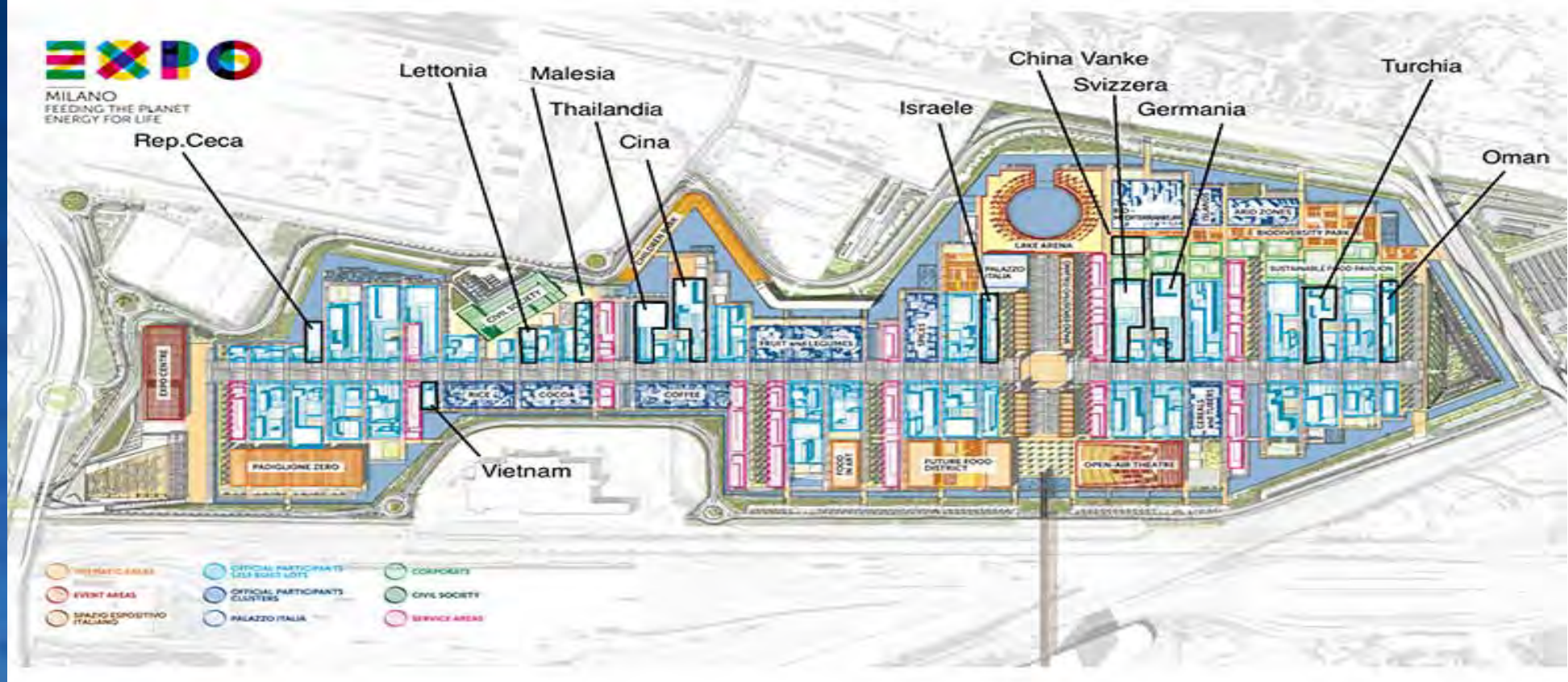


MILAN - ITALY

WORLD EXPO 2015

Latvian Exhibition Area









VATICAN CITY - ITALY
Welcome Center
World Jubilee Year 2000







BRAND

LOGO

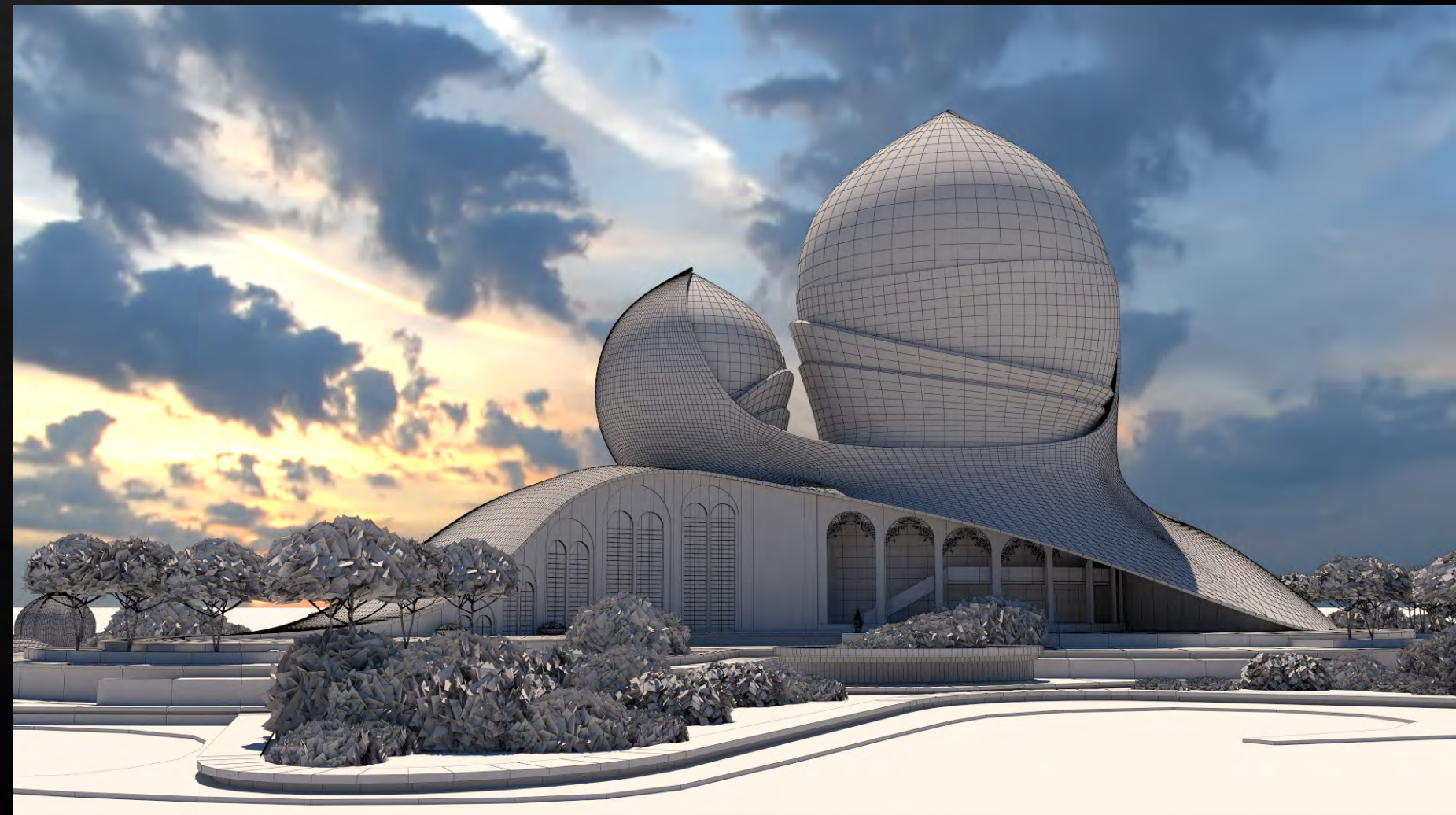
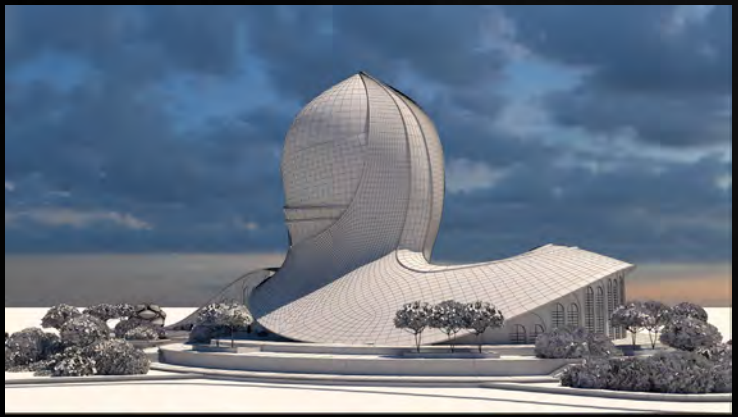
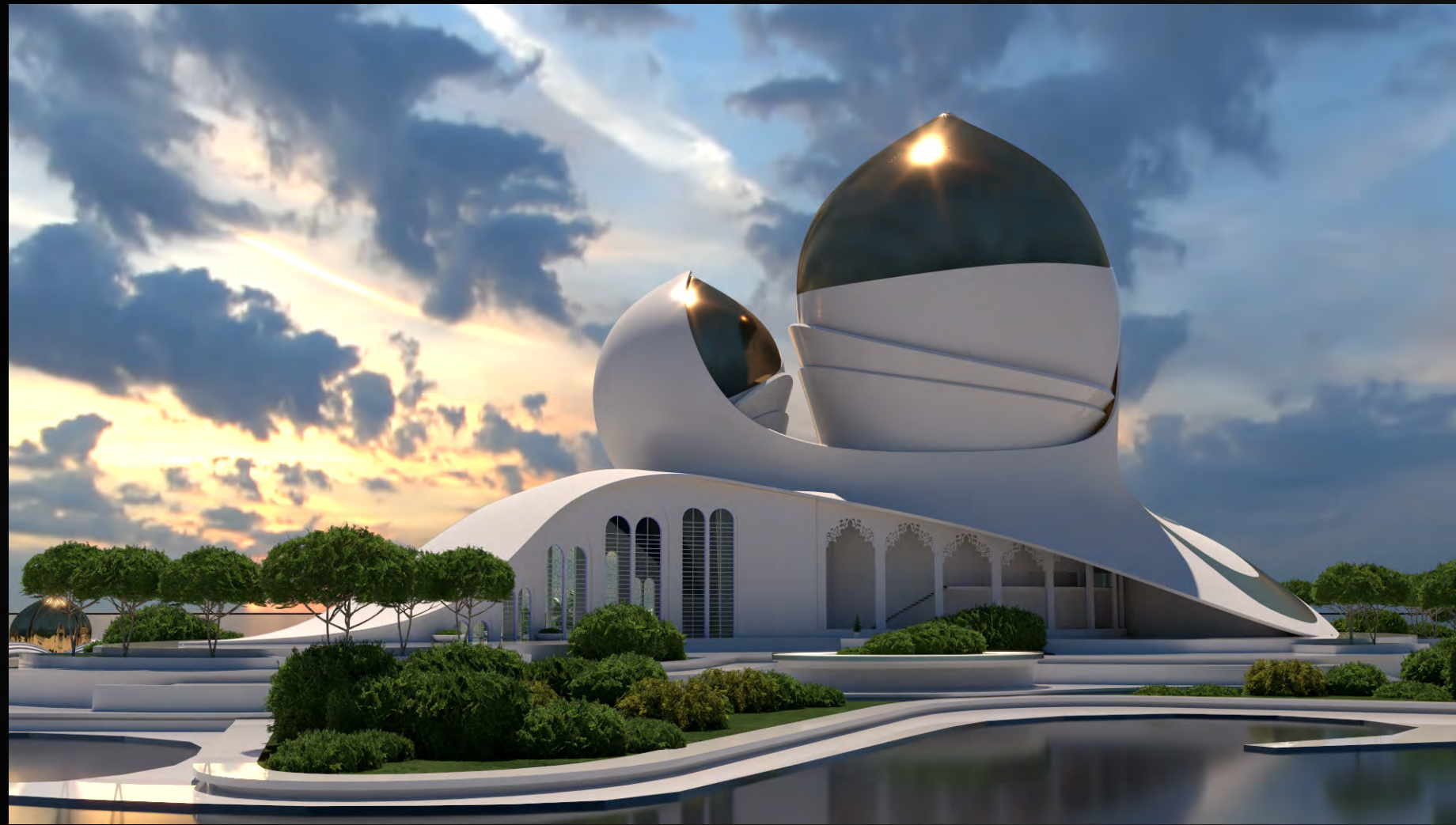
MARCHIO

MARCHIO

CONCEPT - 2016

HISTORY & TRADITION MUSEUM





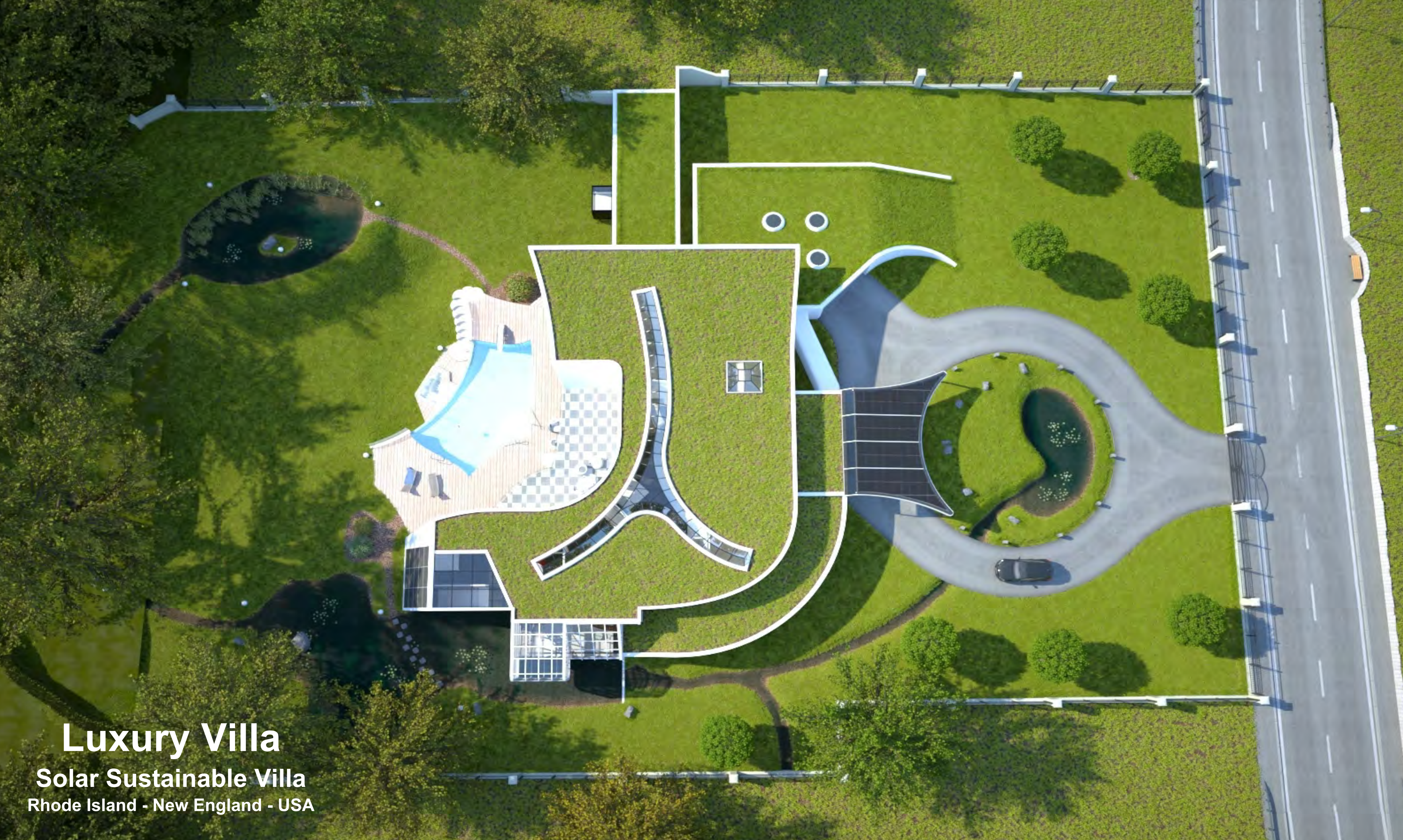




Luxury Villa
Grand Bahamas - High Rock

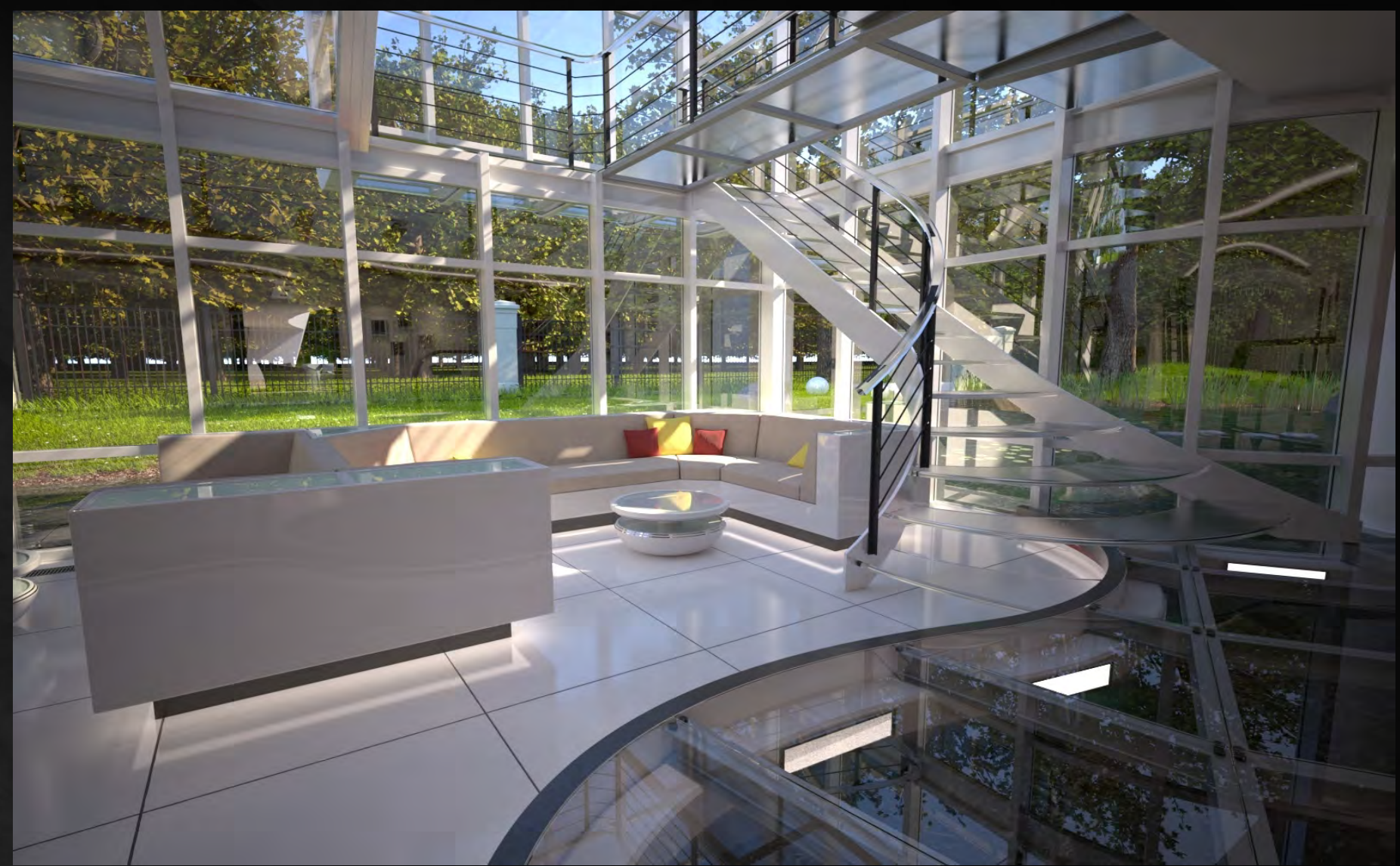






Luxury Villa

Solar Sustainable Villa
Rhode Island - New England - USA



Arch. EMANUELE GARUFI

CEO Florence & Tirana

Emanuele Garufi for over fifteen years, has been primarily involved in the design of highly sustainable buildings, characterized by the use of wooden structures ranging from private residences to multi-story buildings and public structures. His design approach is rooted in the belief that the architect's role should be expressed through taking responsibility for the present era, represented as a built form of our time. This commitment translates into the exploration of low-impact environmental construction solutions and innovative design, a synthesis of an inseparable blend of aesthetic value and ethical responsibility.

In the studio's projects, the quest for a new sustainability aesthetic is realized through the use of natural materials and exposed wood structures. Architectural forms are shaped by the path of the sun throughout seasons, seeking favorable exposures while simultaneously designing surfaces for natural and adaptable protection. A design drawn by the sun and the use of natural and innovative materials.

In recent years, the design experience with wooden structures has allowed the studio to collaborate with real estate developers in developing initiatives from scratch, aiming for the optimal balance between living quality, rich solutions, and minimal environmental impact. The structural component in wood becomes the primary expressive architectural message.

Among the many projects, notable mentions include the Croos Light House building, awarded the CasaClima Golden Cube, and the directional building in the National Park of the Tuscan Archipelago on the Island of Giannutri, part of the UNESCO Biosphere heritage.



Dr. Arch. Emanuele Garufi



FLORENCE



TIRANA



Villaggio da Fiori

Flower Village
Sanremo

Villaggio dei Fiori
Sanremo



edificio certificato CasaClima Gold





Eco VIP Villas
Florence





Eco VIP Villas
Milan



Lighthouse

Milan





36
Cross Light House

Greenwood Villas

Milan



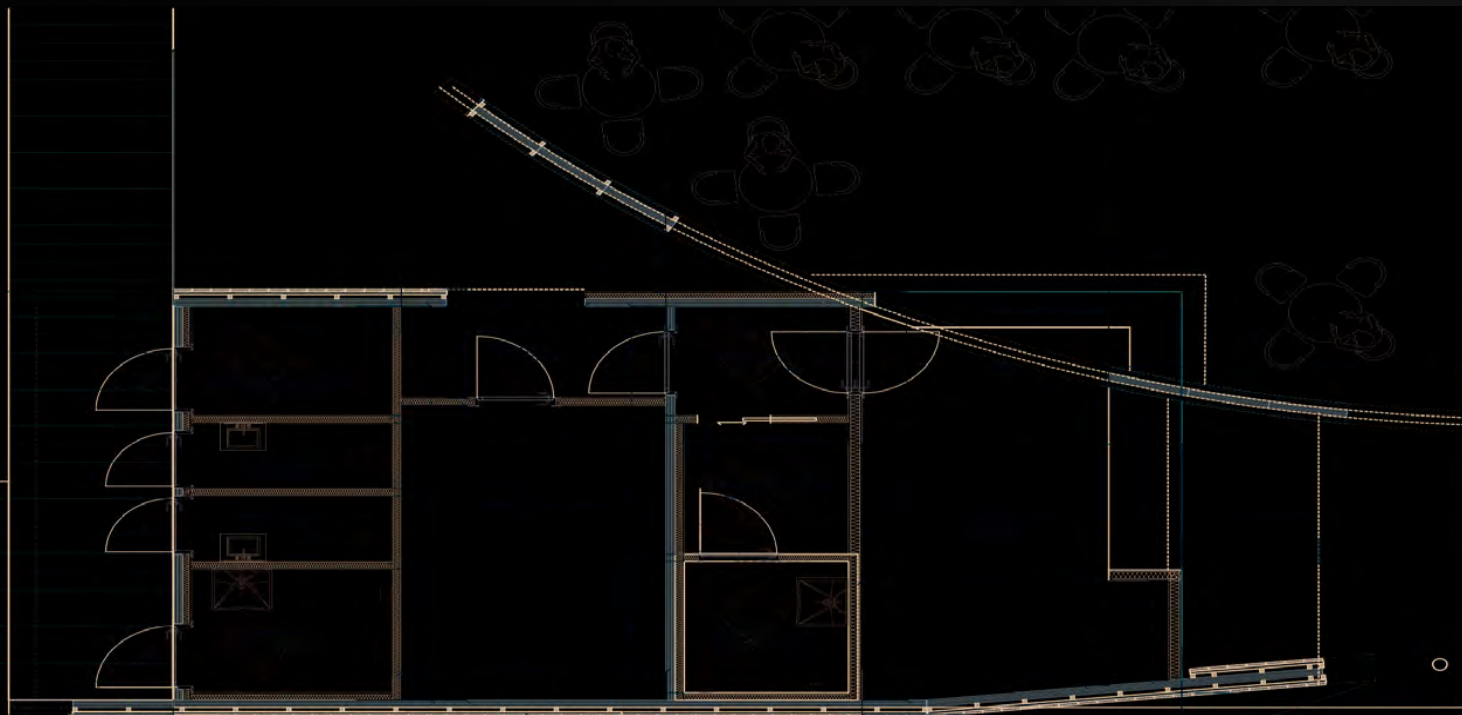




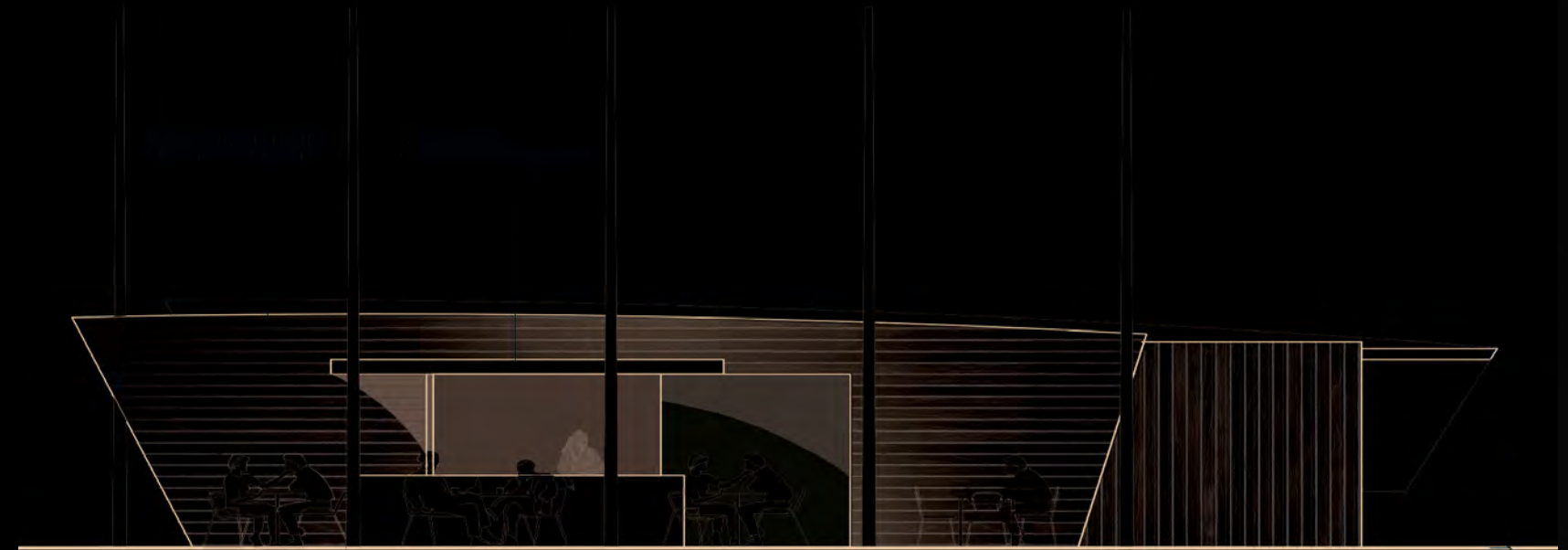
Club On the Beaches

Tuscany





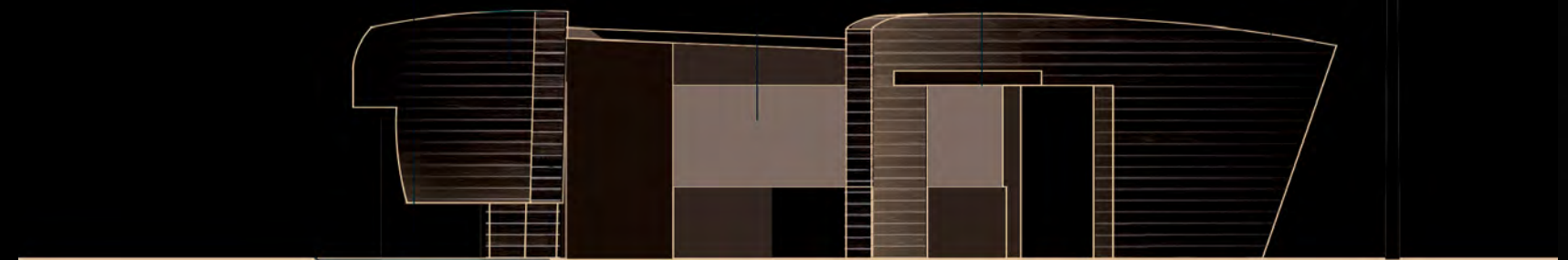
pianta scala 1:100



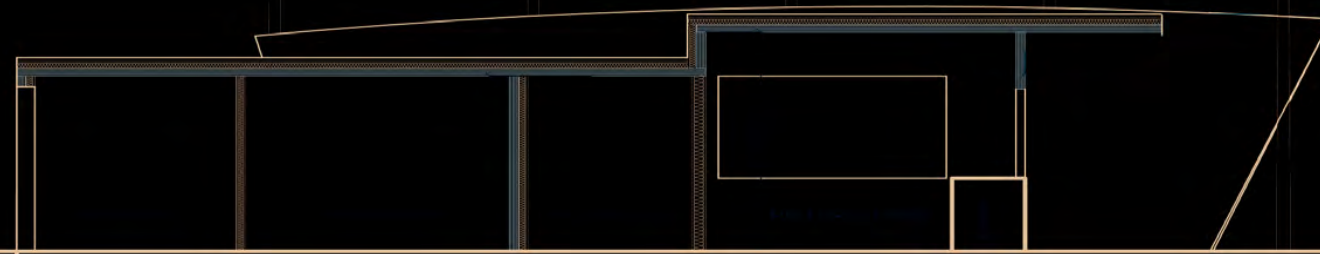
prospetto est



prospetto ovest



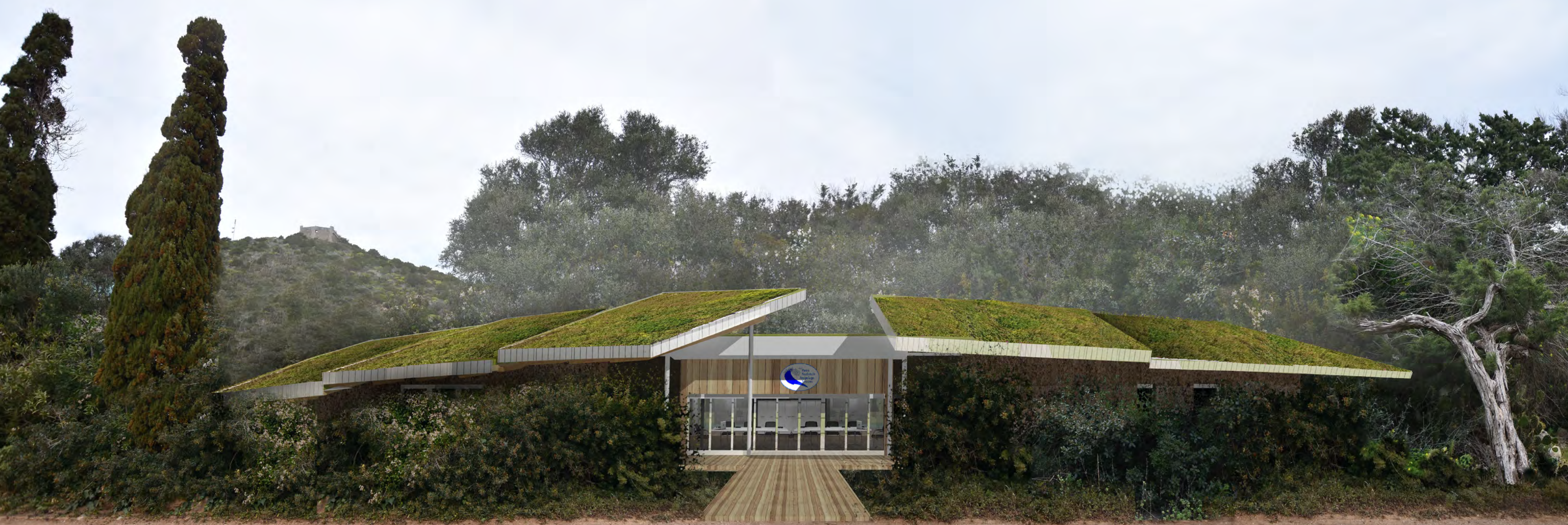
prospetto sud



sezione longitudinale



prospetto nord



Police Station
Giannutri

NUOVA STRUTTURA CHE
RIQUALIFICA, ACCORPANDO
LE VOLUMETRIE ESISTENTI

LIMITE RISPETTO delle DUNE

percorsi accessibilità alla battigia

11.20

28.75

percorsi accessibilità alla battigia

PIATTAFORMA ESISTENTE

SUPERFICIE IN CONCESSIONE
CUMULATIVA DELLE SUPERFICI
CONCESSE ESISTENTI pari a 322mq

DOTAZIONE DI FOTOVOLTAICO

AREA RISTORO ESTERNA

INGRESSO SERVIZI IGIENICI

CAMMINAMENTO IN DOGATO LIGNEO
PER ACCESSIBILITA' A PERSONE CON
RIDOTTA MOBILITA'

DOCCE ESTERNE PROTETTE
DALL'AGGETTO DELLA COPERTURA

ACCESSO RISTORO BANCO ESTERNO

ACCESSO RISTORO BANCO ESTERNO

AREA RISTORO ESTERNA

SPAZIO GIOCHI TAVOLI DA PING PONG

OMBREGGIATURA SPAZI ESTERNI CON
VELE TRIANGOLARI O QUADRATE
REMOVIBILI
FISSATE E ZAVORRATE NELLA SABBIA

SPAZIO GIOCHI TAVOLI ATTREZZATI

OMBREGGIATURA SPAZI ESTERNI CON
VELE TRIANGOLARI O QUADRATE
REMOVIBILI
FISSATE E ZAVORRATE NELLA SABBIA

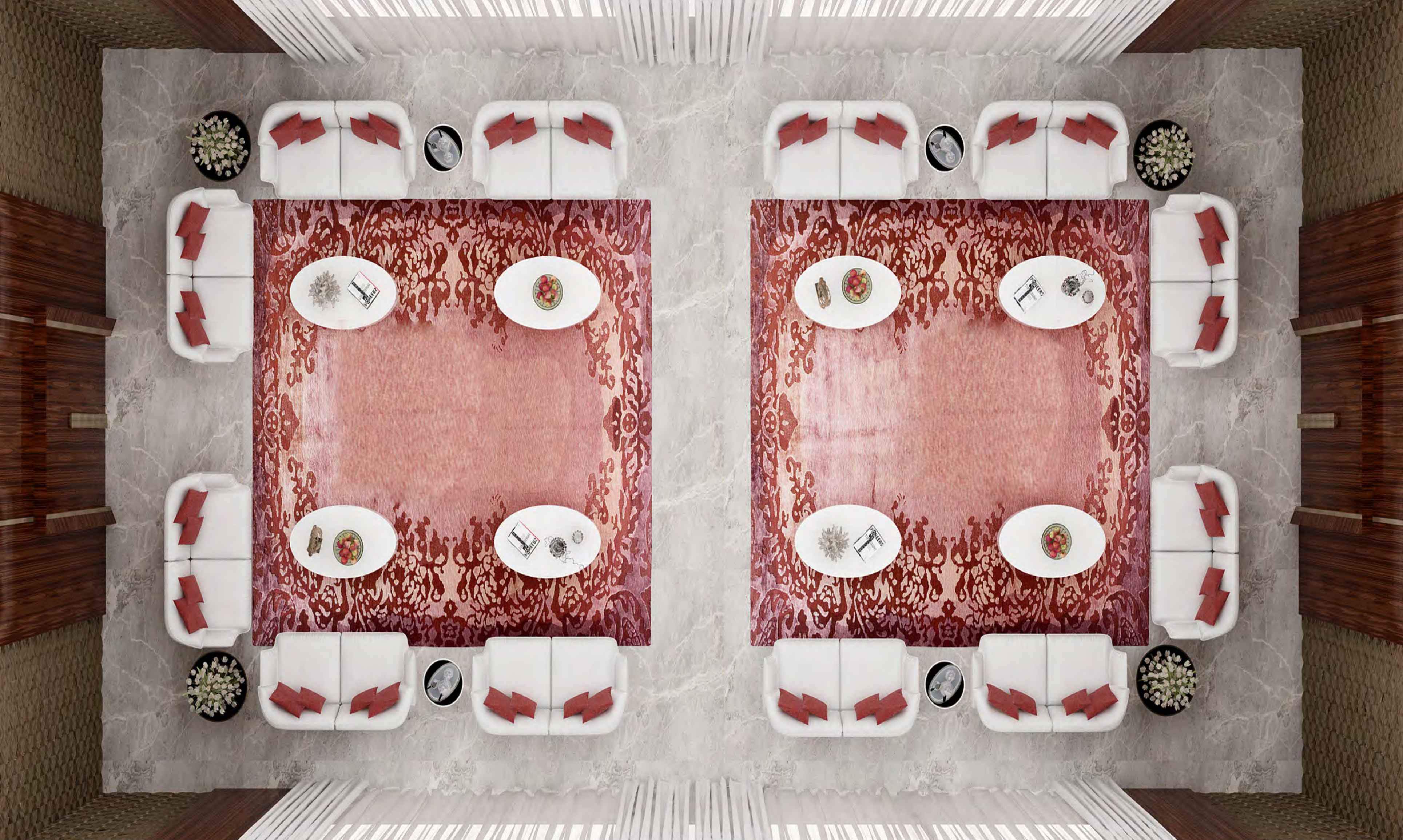
AREA GIOCO BOCCE

GIOCHI PER BAMBINI

CAMMINAMENTO IN DOGATO LIGNEO
PER ACCESSIBILITA' A PERSONE CON
RIDOTTA MOBILITA'

VIP Luxury Villa
Abu Dhabi









VIP Penthouse
Moscow









VIP Penthouse
Milan



LUXITA
Architectural Engineering Consultancy







**Bentley Hotel
Suites**





LU X ITA
Architectural Engineering Consultancy



LUXITA
Architectural Engineering Consultancy















LUXITA
Architectural Engineering Consultancy





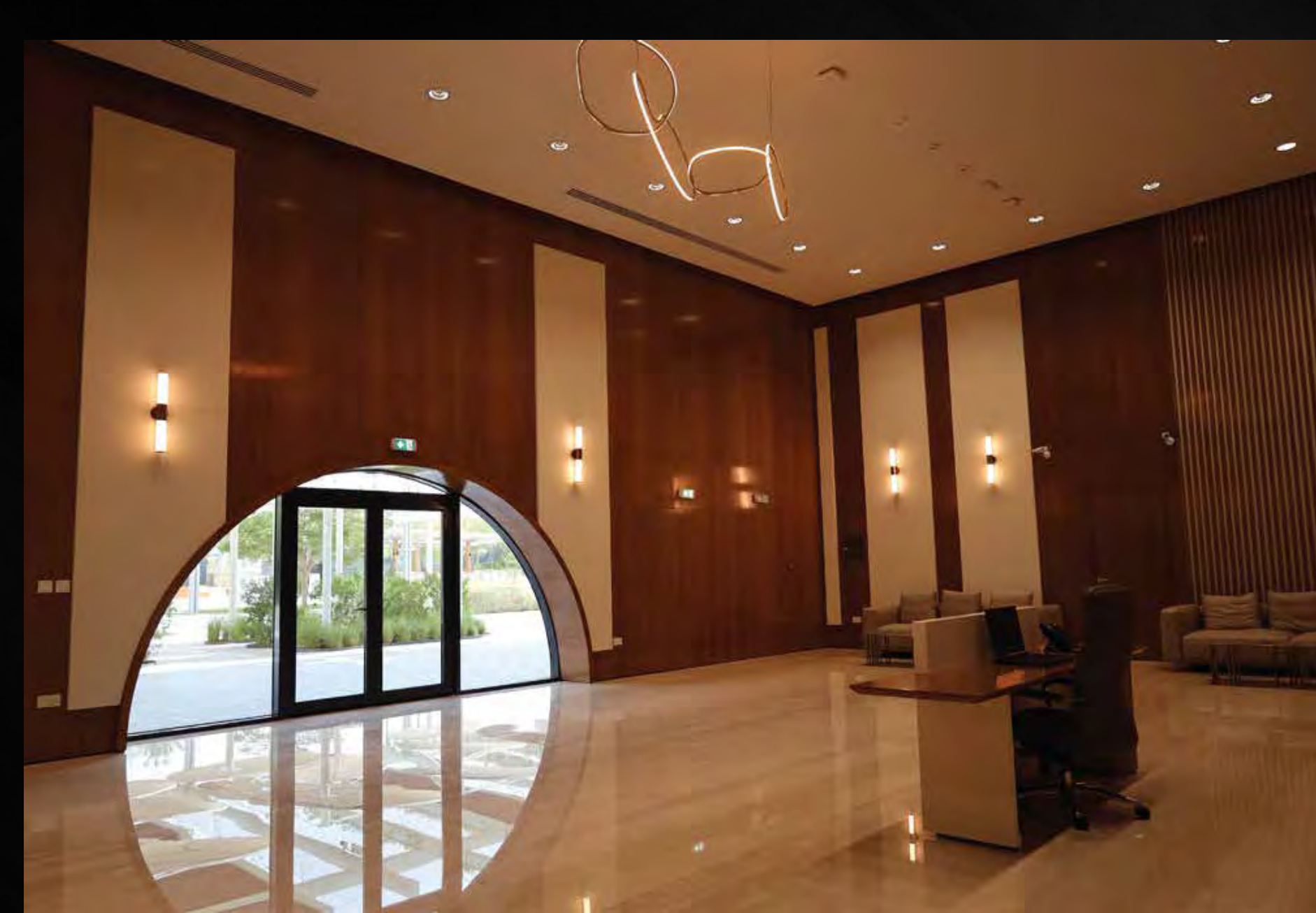


QASR AL WATAN PALACE
Abu Dhabi



كازاخستان
KAZAKHSTAN

Kazakhstan Pavilion
Dubai Expo



Our company is extremely proud to have designed and constructed the Kazakhstan pavilion at Dubai Expo.

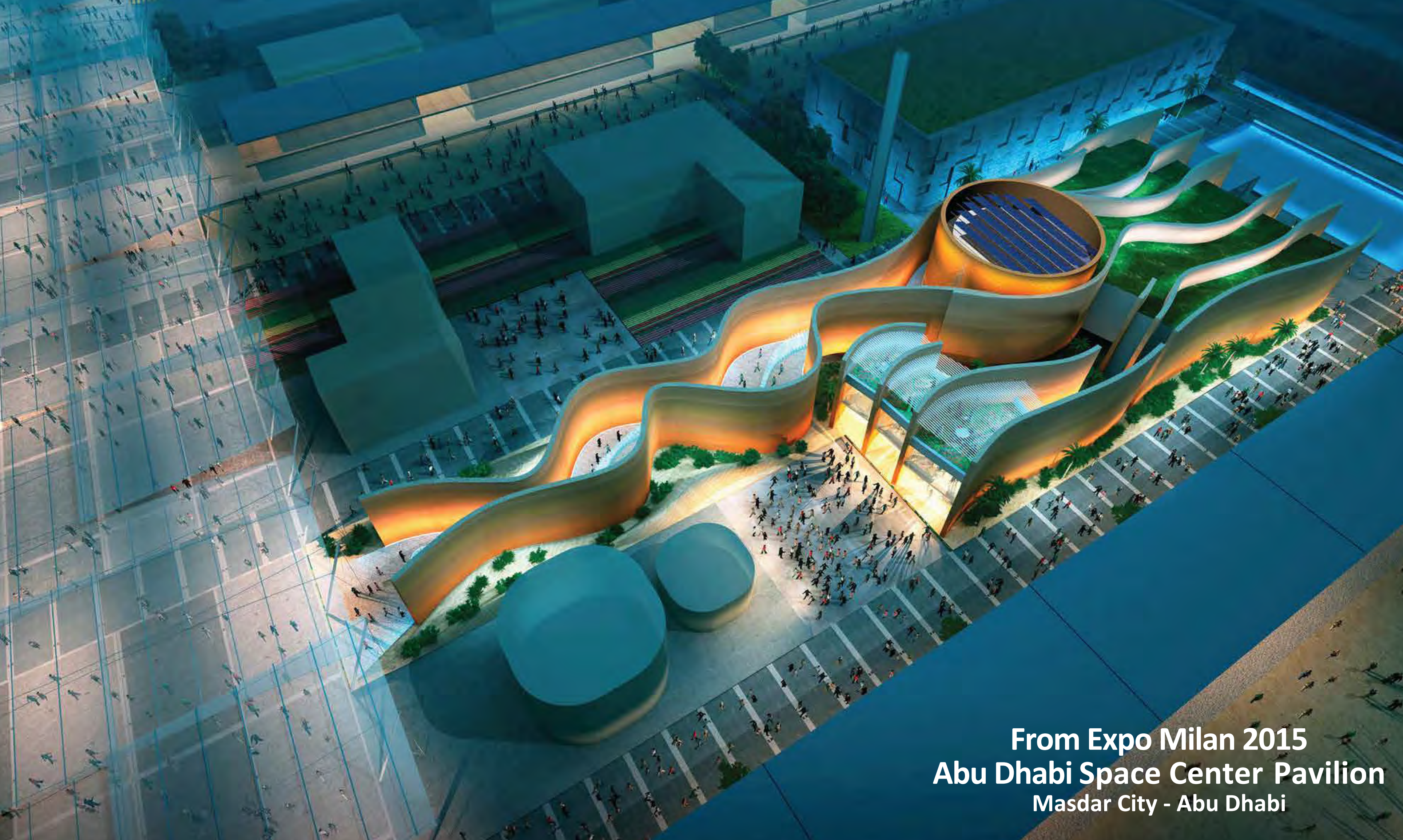
The Pavilion is a stunning representation of Kazakhstan's cultural richness and adaptability.

Our fit-out design and construction expertise combines traditional elements with contemporary utility to create an innovative design that shows visitors Kazakhstan's history and offers modern convenience.

The Kazakhstan pavilion showcases the company's commitment to creating authentic spaces with effective design.



Rixos Premium Hotel
Saadiyat
Abu Dhabi



From Expo Milan 2015
Abu Dhabi Space Center Pavilion
Masdar City - Abu Dhabi

Reem Mall

Abu Dhabi





Ansam Yas Island
Abu Dhabi

Køge University Hospital

Køge, Denmark





Luxury Exclusive Villa
Abu Dhabi

Luxury VIP Villa
Abu Dhabi



UNITED ARAB EMIRATES OFFICES

ABU DHABI : Addax Tower 1201 - Reem Island

DUBAI : Westbury Tower 1201 - Business Bay

EUROPE OFFICES

FLORENCE : Piazza Matteotti N. 40

ELBASAN : Rruga . 28 Nendori Nd 109/1 Elbasan - Tirana

LUXITA ENGINEERING CONSULTANCY - L.L.C - S.P.C

لوکسیتا للاستشارات الهندسية - ذ.م.م - ش.ش.و

Website: www.luxita.ae

Email: info@luxita.ae